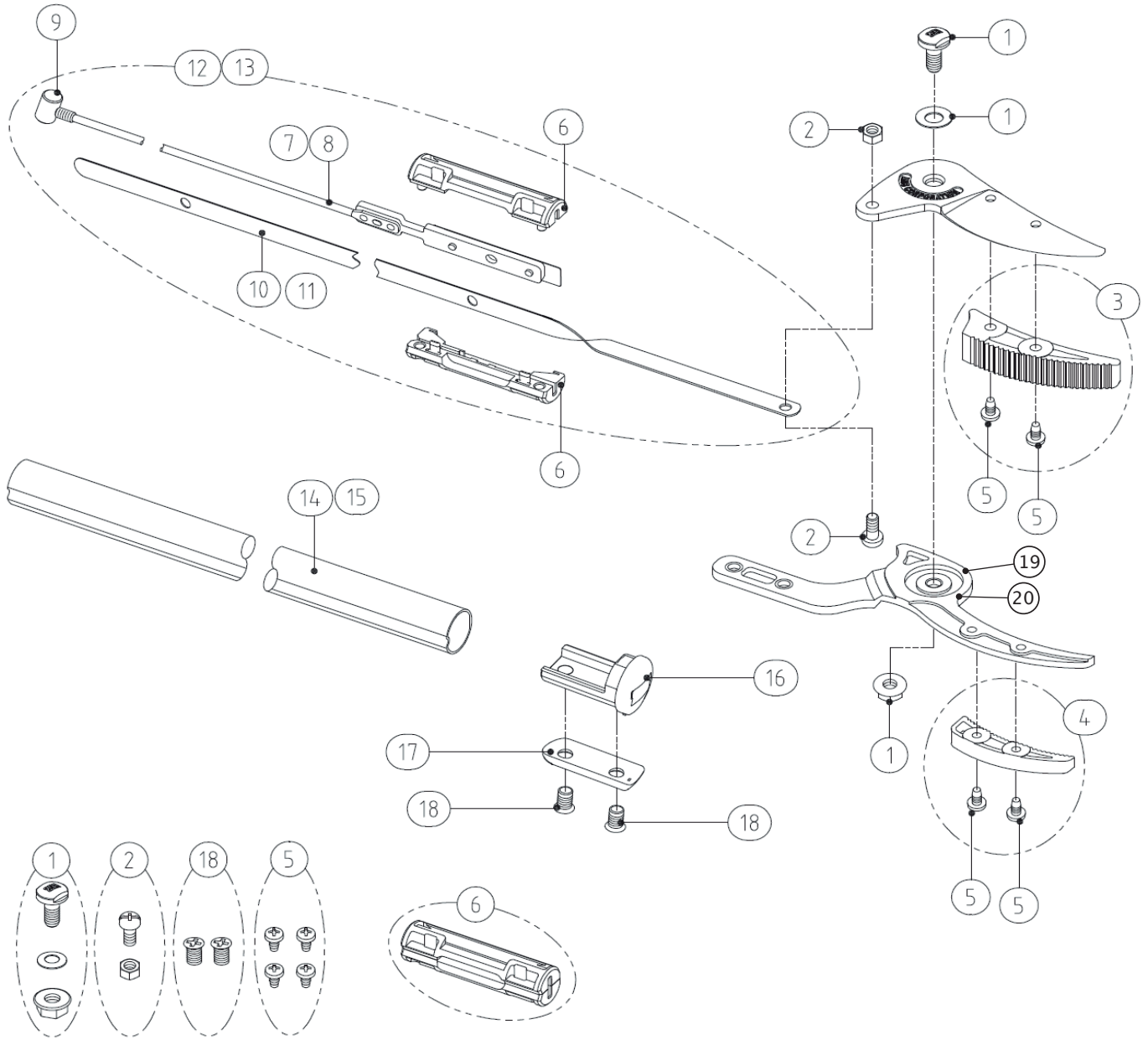


160ZF-2.0-3 / 160ZF-3.0-5 / 180ZF-2.0-3 / 180ZF-3.0-5



PARTS NO.	SPECIFICATION	PARTS NO.	SPECIFICATION
① SP-334	BOLT, WASHER & NUT FOR ZR/ZF SERIES	⑫ HP-ZF-2.0-3	STEEL BAND SET FOR ZF-2.0-3
② SP-44	ROD FIXING BOLT & NUT FOR 150/160/180/190/ZF SERIES	⑬ HP-ZF-3.0-5	STEEL BAND SET FOR ZF-3.0-5
③ SP-351	HOLDING DEVICE FOR THE CUTTING BLADE WITH 2 SCREW FOR 160ZR/ZF	⑭ SP-463	UPPER PIPE FOR 160/180ZF-2.0-3
④ SP-352	HOLDING DEVICE FOR THE COUNTER BLADE WITH 2 SCREW FOR 160ZR/ZF	⑮ SP-464	UPPER PIPE FOR 160/180ZF-3.0-5
⑤ SP-353	SCREWS FOR HOLDING DEVICE OF 160ZR/ZF/160R-1.8 (4PCS)	⑯ SP-465	BLADE FIXING PART FOR ZF SERIES
⑥ SP-335	INNER CASE FOR ZR/ZF SERIES	⑰ SP-466	WASHER PLATE FOR BLADE FIXING PART OF ZF SERIES
⑦ SP-459	ROD ONLY, FOR 160/180ZF-2.0-3	⑱ SP-399	SCREW FOR THE BLADE FIXING PART OF 160R/180R/ZF SERIES (2PCS)
⑧ SP-460	ROD ONLY, FOR 160/180ZF-3.0-5	⑲ ARS160ZF-1	REPLACEMENT BLADE SET
⑨ SP-338	ROD FIXING PART FOR ZR/ZF/160R/180R/180LR SERIES	⑳ ARS180ZF-1	REPLACEMENT BLADE SET
⑩ SP-461	STEEL BAND ONLY, FOR 160/180ZF-2.0-3		
⑪ SP-462	STEEL BAND ONLY, FOR 160/180ZF-3.0-5		